



# Newsletter

Principal Kath Ginnane p 9314 5869 or 9314 1132 f 9314 8498 e [kingsville.ps@edumail.vic.gov.au](mailto:kingsville.ps@edumail.vic.gov.au) w [kingsvilleps.vic.edu.au](http://kingsvilleps.vic.edu.au)



## 2018 Dates to Remember

### Term 2

#### May

Mon 14 <sup>th</sup> May	School Council meeting
Tue 15 <sup>th</sup> May	Level 1 excursion National Gallery of Victoria
15 <sup>th</sup> – 17 <sup>th</sup> May	NAPLAN (levels 3 and 5)
Tue 22 <sup>nd</sup> May	School Photos
Mon 28 <sup>th</sup> May	Parent Forum evening 7 – 8.30p.m.

#### June

Fri 1 <sup>st</sup> Jun	Winter Sports Gala Day
<b>Mon 11<sup>th</sup> Jun</b>	<b>Public Holiday – Queens Birthday</b>
<b>Tue 12<sup>th</sup> Jun</b>	<b>Student Free Day (no students at school)</b>
Tue 26 <sup>th</sup> Jun	Student Led conferences
Thur 28 <sup>th</sup> Jun	Student Led conferences
<b>Fri 29<sup>th</sup> Jun</b>	<b>Last Day Term 2 (2.30p.m. dismissal)</b>

### Term 3

#### July

<b>Mon 16<sup>th</sup> July</b>	<b>First Day Term 3</b>
Sat 21 <sup>st</sup> July	FOKPS Trivia Night
23 <sup>rd</sup> – 27 <sup>th</sup> July	Grade 6 Canberra Camp

#### September

10 <sup>th</sup> -14 <sup>th</sup> Sept	Grade 3/4 Camp – Camp Oasis
18 <sup>th</sup> – 20 <sup>th</sup> Sept	School Concerts
<b>Fri 21<sup>st</sup> Sept</b>	<b>Last Day Term 3 (2.30p.m. dismissal)</b>

### Term dates 2018

**Term 2** - 16<sup>th</sup> April – 29<sup>th</sup> June  
**Term 3** - 16<sup>th</sup> July – 21<sup>st</sup> September  
**Term 4** - 8<sup>th</sup> October – 21<sup>st</sup> December

### Flyers attached

Parent Forum Evening (page 6)  
 Cultivating Curiosity (page 7)  
 Classroom Cuisine menu (page 8)  
 Traffic and Parking information (page 9)

### **General Guidelines for Parents when making any Payments to the school:**

Preferred method of payment is BPay. Your BPay reference number can be located on your family statement and will remain the same throughout your child's time at KPS. EFT/credit card facilities are available over the counter at the main office. Cash payments – correct money is required as there is not always access to change. Please do not send large amounts of cash with your child. Receipts will be issued through your child's classroom. To help the office in finalising accounts, where possible, please limit payments in the last week of any school term.

**Sharyn Fletcher, Business Manager**

**School Council President** Glen Yates 0447 520 058 **School Council email** [yates.glen.j@edumail.vic.gov.au](mailto:yates.glen.j@edumail.vic.gov.au)  
**School Uniform Primary School Wear** 9768 0342 **OSHC Camp Australia co-ordinator** Sarah 0401 054 261



# Principal's Message

## School Improvement Cycle / School Review

School reviews are a time to stop, reflect, analyse and also celebrate. They provide for a collective reflection regarding the individual journey of a school over the last 4 years in performance and practice. The work carried out should ensure positive and valuable contributions to the school's efforts to improve environment, engagement, wellbeing and student learning outcomes.

Every 4 years over the last 2 decades Kingsville has participated in a comprehensive school review process. Back in 2012 the government made a commitment in its **"Towards Victoria as a Learning Community"** document to implement a new approach to accountability for government schools. Since that time significant change and devolution has taken place and now in 2018, KPS will participate in a school review in the first year of the new requirements and expectations. The reforms involved emphasize continuous improvement, whilst recognising the need to support and develop schools with the implementation of targeted differentiated support initiatives. I am pleased to say there is now a much greater focus on collecting and analysing evidence relating to student voice, leadership and agency along with, teacher practice and curriculum content.

So, in line with the DET expected review cycle KPS in 2018 will participate in a review and planning process which has already begun and, will continue until the end of the year. This process will see the completion of what is known as the PRSE (Pre Review Self Evaluation Report) and planning for a series of review days. The report will be informed by a wide range of data, and will take into account opinions and feedback from all of our stakeholders being students, staff, parents / guardians. The school is currently engaging the community, teachers and students in gaining feedback via a range of forums, surveys, discussions and meetings.

There are key review stages, and reporting requirements at sets times during the year and these include-

- **A comprehensive self evaluation process**
- **Engagement of all stakeholders**
- **Preparation of all registration requirements for a government school**
- **Establishment of a Review Panel**
- **Completion of the Pre Review Self Evaluation Report**
- **Preparation meetings with an appointed school reviewer**
- **Validation Day** ( Panel Review Day – August 13<sup>th</sup> )
- **Field Days** ( classroom visits - August 16<sup>th</sup> & 20<sup>th</sup> )
- **Panel Meeting Days**
- **Reviewer's Report completed**
- **Completion of new Strategic Plan – Term 4**

***Parents / Guardians please see full details of the Parent Forum evening relating to the school self evaluation process included page 6 of this newsletter.***

***NB. RSVPs are required for this event.***

## **Student Engagement and Wellbeing**

Working to ensure that students are engaged, motivated, supported and feel valued and understood is vital daily work for all educators. At Kingsville in 2018 in support of our 630 students we have both

- a student Engagement and Wellbeing team – working to address goals set in our AIP and ensuring effective curriculum provision and
- a working party undertaking and supporting our inclusion into the government's Respectful Relationships Program in Victoria

The Respectful Relationships Program is a significant undertaking and Kingsville was successful in gaining a place in program training this year. This has brought with it professional development and the opportunity to work with a project lead and liaison officer and, the opportunity to interact with other accredited schools. We have also gained a \$4,000.00 grant which will be used to support associated training, staff replacement costs and, some resourcing associated with the introduction of this important program. This initiative whilst important is only one aspect of the work being undertaken in this area and the progress and the success of our endeavours will be analysed in our self evaluation and, review process.

Some important highlights in this area have seen all of our 4, 5 and 6 students express opinion regarding school life, teaching, the curriculum, friendships and the opportunities provided for voice when they participated in the Student Attitudes to School survey this week. I would like to acknowledge all of those 250 students who took up on this opportunity in such a mature way. They spent important time reflecting and considering the questions and then capably used the iPad devices to complete the survey. Thank you to Peter Ritchie, Blagma Veljanoska and Jeff McDonald for assisting with setting up an important environment in the library and supervision of the students participation. Thank you also to all staff for flexibility shown due to restrictions on library use and, any changes to timetables.

Please note any students who were absent for their set classroom survey time have been provided with a 'make up' time today.

Other highlights as outlined in Peter Ritchie, Assistant Principal's Teaching and Learning report to School Council this month include -

- work on developing zones of regulation i.e growing knowledge and understanding of the important role zones of regulation can play in school engagement programs
- working to build a common understanding with staff about examples of what effective and 'Make it right' and 'Restorative Chat' look and sound like
- developing an updated structure of a 'Make it Right' process including adjusted content and, new format online (compass chronical) for staff use
- examining the possibility of developing a proposal for school consideration around peer student mediation.

All of these endeavours and considerations work to support our 2018 Annual Implementation Plan in the area of ***Positive Climate for Learning*** (Empowering students learning and school pride)



# Kingsville Awards

To be presented on Friday 18<sup>th</sup> May

<b>FCM</b>	Nathan Brown	<b>34AM</b>	Darla Granger
<b>FCW</b>	Sophie Luong	<b>34GP</b>	Eve Harris
<b>FDG</b>	Erica Heap	<b>34HL</b>	
<b>FEE</b>	Evelyn Kinred	<b>34JL</b>	Manas Rastogi
<b>FLI</b>	Frida Crawford	<b>34KG</b>	Charlie Gunn
<b>1JG</b>	Tahmid Hasan	<b>34MC</b>	Thomas Cameron
<b>1JH</b>	Luka Jeka	<b>34SP</b>	Archie Lucas
<b>1RM</b>	Oliver Bailey - Stegic	<b>5AO</b>	Xavier Trollope
<b>1SH</b>	Sienna O'Donnell	<b>5DS</b>	Kate Harman
<b>2AT</b>		<b>5GM</b>	
<b>2GJ</b>	Harry Hoang	<b>6JD</b>	
<b>2LB</b>	Keaton Fawcett	<b>6MM</b>	Dev Ratnasekara
<b>2RT</b>	Harrison Wheeler	<b>6SE</b>	Izabelle Louey



## Happy Birthday

10<sup>th</sup> – 16<sup>th</sup> May

Happy Birthday to Hattie Fogarty, Rowan Rowntree, Diesel Singh, Ermias Mersha, Matilda Williams, Mikayla Tsiflidis, Archie Buckley, Hazel Nguyen, Ella Laverty, Sylvie Ward and Phoenix Goffin.

## Sports News

### Cross Country

On Friday 4<sup>th</sup> May, 24 children went to Yarraville Gardens to compete in the Spotswood/Yarraville District Cross Country event.

The children displayed great sportsmanship and resilience to complete the course against the other 7 schools. It was great to see them cheering on, not just our school, but children from other schools as well.

The team for the next level will be published shortly, and the Division event will be held on **Wednesday 6<sup>th</sup> June** at Brimbank.

### Athletics

The final events that are part of the athletics day have been completed this week. The team to compete in the District event on **7<sup>th</sup> August** will be able to be finalised in the next few weeks, as we need to confirm numbers with the new structure of our District. The cup will also be able to be presented to the winning house for the event as well.

*Lorey Bentley, Sport and PE Coordinator*

# Lost Property

It is important that all students' belongings are clearly named, and we recommend checking that the name is still clearly visible throughout the year. At the end of each term, all unnamed articles will be displayed and parents will be given the opportunity to inspect them and purchase them at our Second Hand Uniform Stall. Please note all named items are returned to students, but unlabelled items will be donated to the second Hand Uniform Stall.

*Year 3/4M and Michael*

# Friends of KPS News

## **Trivia Night**

The Friends of KPS will be hosting a Trivia Night again this year on Saturday 21<sup>st</sup> July. It is always a fantastic night of fun, trivia, costumes and dancing. More details regarding the theme and the purchase of tickets will be available in the coming weeks. For the time being, mark this on your calendar and start organising your team of 8. This is a parents only event. All details will be available through the Newsletter and Compass.

*Anna Swan, Trivia Night co-ordinator*

# School Improvement Cycle Parent Forum Evening

**Date :** May 28<sup>th</sup>

**Time :** 7 – 8.30pm

**Location:** Senior School Classroom Block (also known as BER block)

**Purpose :** This is an opportunity for parent/ guardian members of our school community to come along and provide feedback, ideas, opinions.

## What About?

This year we are undertaking a school self evaluation and are reflecting upon to what extent the school has achieved the goals set in our current “Strategic Plan” 2015 – 2018.

The school leadership team is currently engaging with staff, students, parents, school council and DET regional representatives, in working to gain input from all stakeholders. To achieve this we have already carried out staff and student forums and, are now working to gain parent feedback via this advertised parent forum evening. Reflection will focus on observed and evidenced outcomes and achievements and, will hopefully assist in identifying effective strategies that are in place now as well as, noting areas for improvement which will inform planning for the next Strategic Plan and 4 year school improvement cycle.

## What will I be reflecting on?

As a community member you will be able to ‘have a voice’ reflect and provide feedback on the focus areas of

- What are we doing well?
- What should we stop doing?
- What should we start doing? ( new ideas)

Response and ideas will relate to the key accountability area of

- Excellence in Teaching & Learning (Achievement)
  - Positive Climate for Learning (Engagement)
  - Positive Climate for Learning (Wellbeing)
- and
- Community Engagement in Learning

The information gained from parents, staff and students will inform the school Pre Review Self Evaluation Report which is a key component of the school review process.

The forum will be managed by an educational consultant Sue Conquest and the focus groups will be run by current school council members. As Principal I will not be in attendance and this is intentional as good practice shows school council members working with parents to gain opinions is a very effective model. I am hopeful we will have a number of parents / guardians able to attend.

## RSVP

We do need to know how many parents will be attending the Parent Forum so please email your response to Betty Petrovski [Petrovski.elizabeth.e@edumail.vic.gov.au](mailto:Petrovski.elizabeth.e@edumail.vic.gov.au) with a subject line of Parent Forum by Thursday 26<sup>th</sup> May.

Light refreshments will be provided.





# Cultivating Curiosity

Last week a small group of Kingsville staff were lucky enough to attend a one day workshop on *Teaching as, through and for inquiry*. This workshop was run by Kath Murdoch. Kath is an experienced teacher, author, university lecturer and popular consultant who has worked for many years in schools throughout Australia, New Zealand, Asia, America and Europe. She is widely respected for her work in the field of inquiry based learning and integrative curriculum in which she has taught, researched and published for well over 20 years.

This was an engaging, provoking and successful day for all teachers involved. There was a great deal of new knowledge and strategies that we took away from the day. One strategy in particular stood out to me as a key practice of inquiry. That was cultivating curiosity.

Cultivating curiosity involves inviting wonder and valuing the aesthetic. Providing experiences that activate the senses and give students opportunities to devise, share and explore questions that matter to them. It involves using materials and experiences that provoke uncertainty and puzzlement and a desire to seek clarity. It involves wondering aloud about the world. At teachers we should model what it means to be a curious person and celebrate that disposition in our students.

During the workshop teachers participated in activities that cultivated our curiosity such as exploring strange and interesting photos and objects, objects that you could pick up and feel, that make you wonder what they were, reading and discussing thought provoking and challenging statements about teaching and viewing websites that provoke and make you think about the world.

One of these websites was Wonderopolis. <https://wonderopolis.org/> Wonderopolis has a new wondering everyday. Wonderings such as: Can you make art from candy? Are birds a danger to airplanes? Have you ever eaten a tamale? How many sharks are in the ocean?

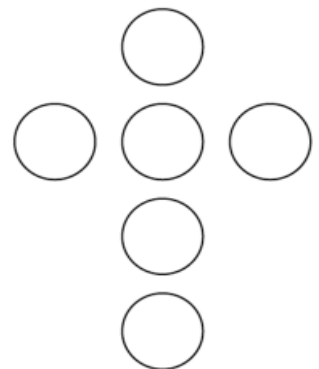
As Kath Murdoch states, *'While some children are never without a question to explore or a problem to solve, others can find it challenging to make their own choices or to identify something in which they are interested. As adults we should be mindful of the key role we play in creating an environment that nurtures curiosity and provokes wonder.'*

## Try some of these brainteasers

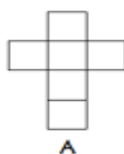
The grid below has a certain pattern to it that holds true for each row. Can you determine that pattern and find the missing number?

6	3	8
4	9	6
7	5	5
9	3	7
?	8	4

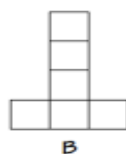
Six coins are arranged as shown. Can you move one coin to make a cross with four coins in each row?



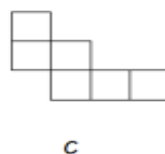
There are 11 ways to unfold a cube into a flat, two-dimensional shape. A two-dimensional pattern that can be folded into a three-dimensional shape is called a net. One of the nets below cannot be folded into a cube. Which one is it?



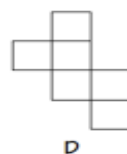
A



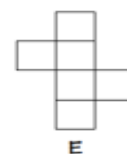
B



C



D



E

**COMMENCING WITH KINGSVILLE PRIMARY – TERM 1, 2018**

A Two Course Lunch is \$8.95 and a Three Course Lunch is \$10.35

**AVAILABLE ON WEDNESDAY'S!** (From 28/2/18)

**LUNCH ITEM ONE**

**SALADS**

- Greek Style Salad with Feta and Olives (GF)
- Brown Rice & Mixed Bean Salad (GF)
- Thai Style Noodle Salad (GF)
- Quinoa, Tabouli & Tuna Salad (GF)
- Pic(k)nic Box – Vegetarian (GF)
- Pic(k)nic Box with Ham (GF)

**SUSHI**

- Sushi - Teriyaki Chicken Hand Rolls (2)
- Sushi - Cooked Tuna Hand Rolls (2)
- Sushi - Avocado Hand Rolls (2)
- Sushi - Cucumber Hand Rolls (2)
- Sushi – Vegetarian Hand Rolls (2)

**BAKERY**

- Cheese and Bacon Roll
- Cheese and Vegemite Scroll
- Supreme Pizza Roll
- Topped with Only Cheese Roll

**PITA PIZZAS**

- Margherita Pita Pizza
- Ham and Pineapple Pita Pizza
- Fresh Tomato and Italian Herb Pita Pizza
- Spinach & Feta Pita Pizza

**SANDWICHES, ROLLS & WRAPS**

- Ham, Cheese and Tomato Sandwich
- Turkey, Cranberry, Lettuce and Cheese Sandwich
- Ham and Cheese Roll
- Gluten Free Ham & Cheese Sandwich (GF)
- Simple Salad Roll
- Vegemite Sandwich
- Mild Salami and Salad Roll
- Beetroot and Salad Roll
- Roast Beef, Fruit Chutney, Cheese and Lettuce Roll
- Cheese and Salad Roll
- Wholegrain Cheese and Tomato Sandwich
- WRAP (GF) Ham and Salad
- Chicken and Salad Roll
- Wholegrain ROLL Tuna and Salad

**LUNCH ITEM TWO/THREE**

**FRESH FRUIT & VEG**

- Fresh Fruit Combo
- Freshly chopped Orange Segments
- Freshly chopped Strawberries with Grapes
- Apple with Lemon Juice, Brown Sugar & Cinnamon
- Freshly Chopped Watermelon pieces
- Chopped Carrot, Cucumber, Red & Yellow Capsicum
- Lightly Steamed Corn Wheels & Broccoli pieces
- Freshly chopped Cantaloupe & Watermelon
- Cherry Tomatoes with Tasty Cheese & Rice Crackers
- Whole Banana with Chocolate Dipping Sauce

**BAKED GOODS**

- Choc Chip Cookie
- Hot Cross Bun
- Hedgehog Slice
- Finger Bun with Sprinkles
- Banana Cup Cake (GF, DF)
- Iced Cup Cake
- Choc Cup Cake (GF,DF)
- Blueberry Muffin
- Apple & Cinnamon Cake

**YOGHURT** (100gm Serve)

- Chobani Yoghurt - Raspberry
- Chobani Yoghurt - Blueberry
- Chobani Yoghurt - Mango
- Chobani Yoghurt - Plain

**DIPS & CRACKERS**

- Tzatziki dip with Rice Crackers
- Avocado dip with Rice Crackers
- Spring Onion dip with Rice Crackers

**POPCORN/SNACKS**

- Cobs Popcorn, Lightly Salted
- Cobs Popcorn Slightly Sweet, Lightly Salted
- Lightly salted Fav'va Beans
- Cranberry Freedom Foods Bar (GF)

**DRINKS**

- Apple Juice
- Orange Juice
- Nippy's Chocolate Milk

For more information check out our website

[www.classroomcuisine.com.au](http://www.classroomcuisine.com.au)





**Legend**

- No Stopping
- 5 Minute Parking
- Disabled Parking (Accessible Bays)
- Unrestricted Parking
- No Stopping 8.30-9.30am & 3.00- 4pm

Drop-off and pick-up areas help to make school zones safe because children are dropped off and picked up close to the school's entrance.  
Please remember that **5 minutes** is the *maximum* time you may park in these areas.

- The fine for overstaying the time in any restricted parking area is \$79.
- The fine for parking in a No Stopping zone is \$159.
- The fine for parking in disabled parking (accessible bay) without the appropriate sticker is \$159.



**No Stopping**

No Stopping zones are not to be used at any time for parking, dropping off or picking up your children. No stopping zones can also be defined by yellow kerb markings.

*Hours & days of operation applies to some signs. This means restrictions apply for those times only.*

**Remember it is an offence to:**

- Stop or park within 10 metres of an intersection or corner,
- Stop or park in a bus zone,
- Stop or park on a nature strip.

**Double Parking**



Vehicles must not stop on a road next to a parked vehicle, even for a short time to drop off or pick up children. You cannot stop next to a parked vehicle for any reason.

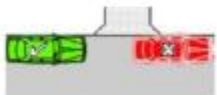
**Safety tips:**

Allow enough time to take your child to school safely. Consider parking a little bit further away and walking a short distance to school.

Observe all traffic control signs and the directions of the school crossing supervisors.

Plan with your child when and where they can be picked up safely. Find locations where it is safe to get out of the car and cross the road.

**Driveways**



A vehicle is not allowed to park over an entrance to a driveway to pick up or drop off.

**NEVER** call your child across the road.

**Drivers please remember:**



When turning at any intersection (except roundabouts) you **MUST GIVE WAY** to all pedestrians crossing the road.

- ✓ We want to ensure the safety of our children, other pedestrians and motorists around our streets and the school.
- ✓ Children are both vulnerable and often act on impulse. It is important for adults to lead by example and set good road safety practices when crossing roads.